



Mobile lift



Tow truck



Cranes



Winch for jeep

F21 Series Radio Controls

F21-2S / 2D / 4S / 4SB / 4D / E1 / E1B

Useable in a vast array of INDUSTRIAL EQUIPMENT

- *Water-proof and Dust-proof meets IP 65 standard
- *Durable casing made of Fiber Reinforced Nylon
- *Superior operating temperature range -35°C ~ +80°C
- *Very low power consumption design using only 2 AA Size Alkaline batteries with 4 months average battery life
- *Integrates Hamming Code, Self-diagnosis and 4.3 billion ID Codes
- *Easy programming via WIN95/98/2000/NT
- *Operating distance up to 50 ~ 100 meters (depending on model)



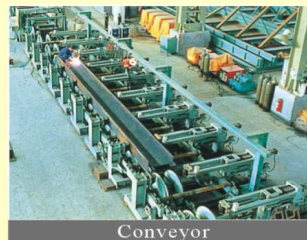
Truck tail



Chain hoist



Gate



Conveyor



Hydraulic equipment



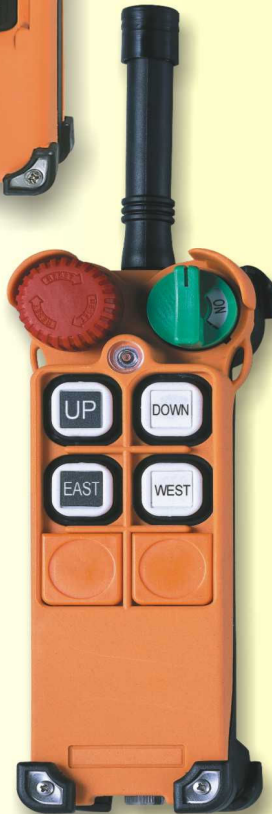
PLC Human-machine Interface



Model:F21-4SB (4-button w/single speed)
Size:164x75x46mm
Weight:about 370 g (w/batteries)



Model:F21-E1B (6-button w/single speed)
Size:164x75x46mm
Weight:about 380 g (w/batteries)



Model:F21-4S (4-button w/single speed)
F21-4D (4-button w/double speed)
Size:156x61x51mm
Weight:about 320 g (w/batteries)



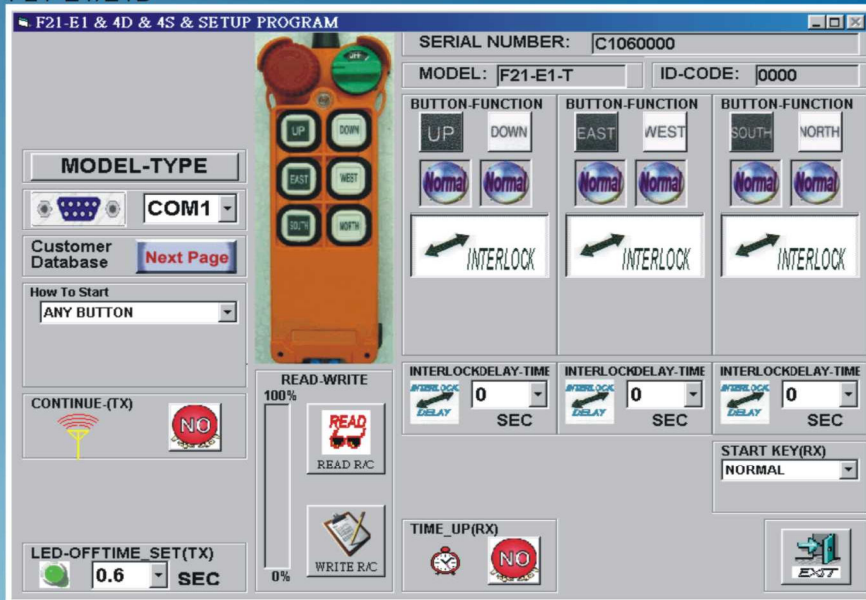
Model:F21-2S (2-button w/single speed)
F21-2D (2-button w/double speed)
Size:130x45x22mm
Weight:about 120 g (w/batteries)

TELECRANE F21-E1 / 4/2

TELECRANE

F21 Series PC program window

F21-E1/E1B

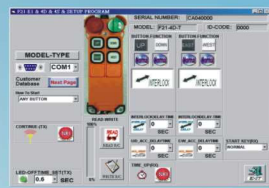
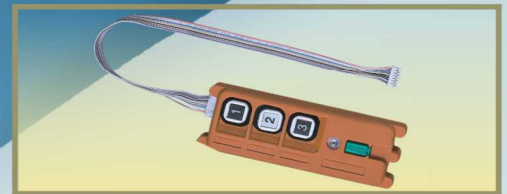


F21-E1/4/2 Receiver
Weight: 550 g (w/o wire cable)
Size: 185x85x85 mm

Opt08: CD-ROM & interface Cable



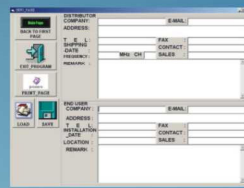
Opt09: Copier



F21-4S/4D/4SB

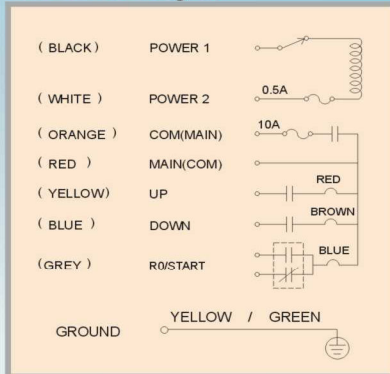


F21-2S/2D

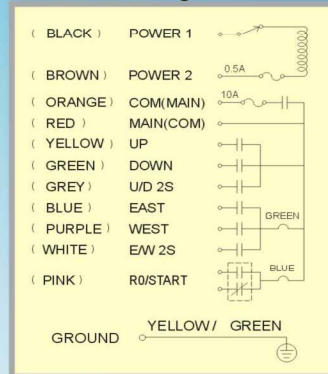


Next window

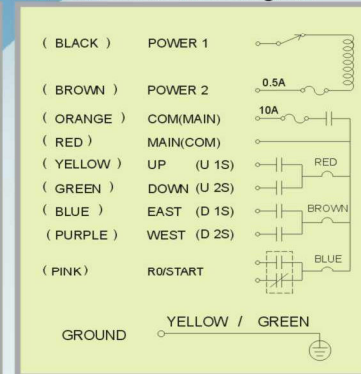
F21-2S Wire Diagram



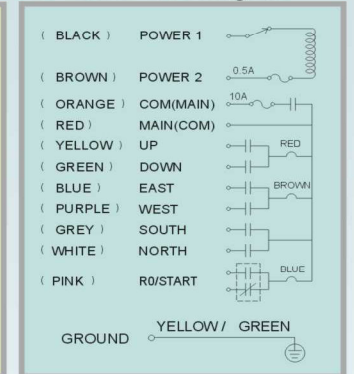
F21-4D Wire Diagram



F21-4S/4SB/2D Wire Diagram



F21-E1/E1B Wire Diagram



Model: F21-4 D - 1

Purchasing information

- 0 DC 12V
- 1 AC12~24V / DC 16~40V
- 2 AC110 / 220V 50 / 60Hz
- 3 AC220 / 380V 50 / 60Hz
- 4 AC48 / 110V 50 / 60Hz

- D Double speed
- S Single speed
- 2 2 button
- 4 4 button

- F21-4SB-4 4-button w/single speed, AC 48V/110V 50/60Hz
- F21-E1-2 6-button w/single speed, AC 110V/220V 50/60Hz
- F21-E1B-O 6-button w/single speed, DC 12V

